

Regeneration and Leisure Scrutiny Sub-Committee

Wednesday 2 February 2011

7.00 pm

Town Hall, Peckham Road, London SE5 8UB

Membership

Councillor Mark Glover (Chair)
Councillor Paul Noblet (Vice-Chair)
Councillor Columba Blango
Councillor Catherine Bowman
Councillor Dan Garfield
Councillor Helen Morrissey
Councillor Martin Seaton

Reserves

Councillor Stephen Govier
Councillor Helen Hayes
Councillor Jeff Hook
Councillor Andy Simmons
Councillor Geoffrey Thornton

INFORMATION FOR MEMBERS OF THE PUBLIC

Access to information You have the right to request to inspect copies of minutes and reports on this agenda as well as the background documents used in the preparation of these reports.

Babysitting/Carers allowances If you are a resident of the borough and have paid someone to look after your children, an elderly dependant or a dependant with disabilities so that you could attend this meeting, you may claim an allowance from the council. Please collect a claim form at the meeting.

Access The council is committed to making its meetings accessible. Further details on building access, translation, provision of signers etc for this meeting are on the council's web site: www.southwark.gov.uk or please contact the person below.

Contact Julie Timbrell on 020 7525 0514 or email: julie.timbrell@southwark.gov.uk
Webpage:

Members of the committee are summoned to attend this meeting

Annie Shepperd

Chief Executive

Date: Date Not Specified



Regeneration and Leisure Scrutiny Sub-Committee

Wednesday 2 February 2011
7.00 pm
Town Hall, Peckham Road, London SE5 8UB

Order of Business

Item No.	Title	Page No.
	PART A - OPEN BUSINESS	
1.	APOLOGIES	
2.	NOTIFICATION OF ANY ITEMS OF BUSINESS WHICH THE CHAIR DEEMS URGENT	
	In special circumstances, an item of business may be added to an agenda within five clear working days of the meeting.	
3.	DISCLOSURE OF INTERESTS AND DISPENSATIONS	
	Members to declare any personal interests and dispensation in respect of any item of business to be considered at this meeting.	
4.	MINUTES	1 - 24
	To approve as a correct record the Minutes of the open section of the meeting held on 30 November 2010.	
5.	OLYMPIC STRATEGY AND DELIVERY PLANS	25 - 41
6.	EMPLOYMENT AND ENTERPRISE STRATEGY AND DELIVERY PLANS	42 - 43
7.	TOWN CENTRE STRATEGIES - WITH PARTICULAR REFERENCE TO CAMBERWELL, PECKHAM AND WALWORTH	44 - 49
8.	REGENERATION SPENDING	

Item No.

Title

Page No.

The committee resolved to look at opportunities to rebalance regeneration spending. Officers were asked to answer specific queries following a report submitted to the 30 November meeting. A report will follow as a supplementary agenda.

DISCUSSION OF ANY OTHER OPEN ITEMS AS NOTIFIED AT THE START OF THE MEETING.

PART B - CLOSED BUSINESS

DISCUSSION OF ANY CLOSED ITEMS AS NOTIFIED AT THE START OF THE MEETING AND ACCEPTED BY THE CHAIR AS URGENT.

Date: 25 January 2011



REGENERATION AND LEISURE SCRUTINY SUB-COMMITTEE

MINUTES of the Regeneration and Leisure Scrutiny Sub-Committee held on Tuesday 30 November 2010 at 7.00 pm at Town Hall, Peckham Road, London SE5 8UB

PRESENT: Councillor Mark Glover (Chair)
Councillor Columba Blango
Councillor Catherine Bowman
Councillor Dan Garfield
Councillor Helen Morrissey
Councillor Martin Seaton

**OTHER MEMBERS
PRESENT:**

OFFICER Julie Timbrell, Scrutiny project manager
SUPPORT: Adrian Whittle, Head of Culture, Libraries, Learning and Leisure
Simon Bevan, Interim Head of Planning and Transport
Geri Mcleary, Aylesbury Programme Director

1. APOLOGIES

1.1 Apologies for absence were received from Councillor Paul Noblet. Councillor Catherine Bowman sent apologies for lateness.

2. NOTIFICATION OF ANY ITEMS OF BUSINESS WHICH THE CHAIR DEEMS URGENT

2.1 There were none.

3. DISCLOSURE OF INTERESTS AND DISPENSATIONS

3.1 Councillor Martin Seaton declared a non-prejudicial interest as a resident on the Aylesbury Estate.

4. MINUTES

4.1 The minutes of 13 October 2010 were agreed as an accurate record.

5. CABINET QUESTIONS WITH CLLR VERONICA WARD, LEAD MEMBER FOR CULTURE, LEISURE, SPORT AND THE OLYMPICS

5.1 The lead member for culture, leisure, sport and the Olympics, Councillor Veronica Ward, drew members attention to the written answers and the chair invited supplementary questions. [The written answers, tabled at the meeting, are attached to the minutes]

5.2 A member referred to question 1 on the impact of the coalition cuts and asked the cabinet lead about any areas of her portfolio she may be particularly concerned about with the impending cuts? The cabinet lead responded that sports for young people is under particular budgetary pressure. The end of Working Neighbourhood Fund monies will impact on the delivery of the community games programme and the Southwark Community Games; Southwark Sports Action Zone will end this March ; Southwark has two sports partnerships and Sport England has received a budget reduction of 30%. The cabinet lead pointed out this was on top of the revenue cuts.

5.3 A member stated he was disappointed, and shared the cabinet lead's concern. He stated that sports play an important role in cultivating a healthy community and requested that sports provision remain priority. The cabinet lead responded that with the shrunken pot now available it will be difficult, however partners such as schools, the community games and the sports partnerships have been encouraged to talk to each other.

5.4 Another member urged the cabinet lead to write to the secretary of state about the cuts. The cabinet lead stated that she had already written to the secretary of state, and had particularly raised the issue of funding for the schools sports partnerships.

5.5 A member thanked the cabinet lead for her response to question 6 which asked for her opinion on the proposed Elephant and Castle Leisure centre consultation.

5.6 The cabinet lead stated that an outline plan for the centre, guaranteeing a swimming pool, had been agreed with cabinet. Everybody who contributed to the consultation phase had been emailed and the council was very pleased with the response level it received.

5.7 A member asked if a squash court had been in the consultation. The cabinet lead responded it was not at the top of the list of the most requested

facilitates. There was a further query on if squash courts had been on the check list and the number of responses. Adrian Whittle, the Head of Culture, Libraries, Learning and Leisure responded that the squash courts had not been on the check list, but there had been an opportunity for respondents to make suggestions. 52 people suggested squash courts and this was the highest number in the open section. The cabinet lead responded that the design has not been finalised and she would take away these comments, bearing in mind the financial constraints.

- 5.8 A member referred to question 18 where she had enquired about a report on youth clubs and facilities. The member commented that this report contained a map which detailed current provision and how far young people will travel. The member reported that it was a very useful report that would be good to utilize. The cabinet lead commented that they have a new head of youth and the council is looking at provision for young people in the Camberwell Leisure Centre.
- 5.9 A member referred to question 2, which asked if the possible refurbishment of Newington Reference Library would be affected by the possible sale of Walworth Town Hall. The member said she was given to understand that an architect had developed proposals and there had already been investment in drawing up plans for the library's refurbishment. The member requested that these plans were revisited. The cabinet lead stated that the council could revisit the plans and this programme would be considered alongside other possible capital schemes.
- 5.10 A member asked why the council was still consulting on future plans for Southwark Park Athletics track. The cabinet lead responded that despite the lack of identified funds the track was a crumbling facility that the council needed to consider. A member commented that he understood there had been a technical mistake in the planning application and but asked if the funds were still available. The Head of Culture, Libraries, Learning and Leisure explained that the cuts had meant that these funding streams had now ended and the match funding was dependant on these. The council has been advised we cannot put the same application in. A member referred to strong objections and other members commented that there is a need to take a decision in the best needs of the whole community.
- 5.11 There was a supplementary question about the Olympics following on from question 14 and 20. The Head of Culture, Libraries, Learning and Leisure shared the new London 2012 project structure [attached to the minutes]. A member commended the structure and the focus it gave, while another member queried the costs of this structure. The cabinet lead commented that there had been working groups before and these had been revitalised because it is important that we maximise the outcomes through clear action

plans. There is a big push to get investment in the velodrome in Dulwich and it looks like a community trust may be set up and links with the Olympics will be explored.

6. UPDATE AND REVIEW OF AYLESBURY REGENERATION SCHEME

- 6.1 Geri McLeary, Aylesbury regeneration programme director (interim), introduced the report on the Aylesbury regeneration programme. He explained that the report had been written before the recent news had been received from the government about the planned curtailment of Private Finance Initiative (PFI) funding. The Homes and Communities Agency (HCA) recently informed the authority that funding from the Private Finance Initiative, in the current government spending round, will no longer be available for any regeneration projects whose outline business cases have not yet been approved. This decision will affect 13 authorities across the country, including Southwark Council's Aylesbury PFI housing project.
- 6.2 The director confirmed that those PFI projects further along in the PFI approval process, i.e. projects that have already had their Outline Business Case approved, and are in procurement, will continue to receive funding, subject to demonstration of value for money.
- 6.3 The director indicated that the government's decision on the Aylesbury PFI pipeline project came as a complete surprise but the government has indicated that there may be a, albeit small, possibility of some continued funding for the pipeline PFI housing projects.
- 6.4 An update was given on the report circulated and emerging proposals to keep the regeneration scheme on track. Phase 1a is being developed by London & Quadrant and will deliver a new Southwark Resource Centre (replacing the old adult day centre for disabled people) and 261 new homes comprising:
- fifty-two in 2011 (37 homes for social rent and 15 for intermediate uses)
 - one hundred and forty-nine in 2012 (51 homes for social rent and 15 for intermediate uses, 83 for sale)
 - sixty in 2013 (13 homes for social rent, 3 for intermediate uses and 44 homes for sale)
- 6.5 The new homes delivered by this part of the scheme have been ring fenced for Aylesbury tenants. If they are not required by local residents with the appropriate Homesearch banding status then they will be opened up to other people on the list. People in band 1 have been invited to express an interest.
- 6.6 The director explained that the Aylesbury regeneration programme is a

huge and complex programme which relies on a number of different funding streams to push it forward. The Private Finance Initiative (PFI) was set to deliver 360 social homes for rent. The PFI would have acted as a catalyst for a further 583 homes, which when added to the original amount would have created 22% of the 4,200 homes to be delivered under the total Aylesbury regeneration programme.

- 6.7 The project remains underpinned by the Aylesbury Action Plan, which currently requires that 37.5% of the homes built on site must be for social rent, and 12.5% need to be available for intermediate (shared ownership).
- 6.8 The director indicated that that they are using the business case developed for the PFI proposal to look at other funding opportunities because the council does have funds set aside to buy out leaseholders so the sites could be cleared for development.
- 6.9 The chair then invited questions. Members asked how much had been cut from the Social Housing Grant and the director responded that around £2.2 billion had been cut nationwide.
- 6.10 A member asked the director if an earlier submission of the PFI project outline business case would have secured the funding. The officer replied this may have been the case; however the council was not in a position to do so. 13 other authorities are in the same position. Members asked for a list with indicating authorities in the same position be circulated (this information is given at the end of the section).
- 6.11 A member asked what options are there available for funding future regeneration on the Aylesbury if government funding is not available. The director responded that the ratio of social housing to private housing for some sites had been set at 59 % to 41 % for the early phases and this metric may need to be revisited for more marginal sites comprising the programme if more capital investment is needed. This should not affect the overall aim to deliver 50 % affordable housing. Other options that are available under new central government policy are to invite Registered Social Landlords to submit schemes where tenants would be charged up to 80% of market rent; however the administration will need to consider if this is an option it wants to pursue. A member commented on the affordability and desirability of 80% market rents.

6.12 Members asked some detailed questions about particular blocks and requested a map, pasted below:



6.13 Some tenants and home owners on sites 7 (Missenden 300-313) and 10 (Wolverton1-59) have already moved and the director reported the council are speaking to the rest about their rehousing needs and options. The council are looking to continue with the existing rehousing plans for sites 1b (Bradenham 42-256, Chartridge 1-105) and 1c (Arklow 1-28, Chartridge 106-149, Chiltern 1-172). However, it will not be starting rehousing for sites 8 and 9 (Taplow 1-215, Northchurch 1-76, East Street 184-218) for the time being while it develops a new plan.

6.14 Members asked about the costs associated with vacant possession, for

example buying back leaseholds. The director indicated that it had cost the council around £22 million for site 1b. The council has a ball park figure of £13 million for leasehold purchases on site 8 & 9.

- 6.15 The chair thanked the director for his report, presentation and for answering questions.
- 6.16 The information on requested on PFI housing projects in the pipeline is given below:

Support for housing PFI projects

The Department's 2010 Spending Review Settlement provides funding for all Housing PFI projects under contract and in procurement but no funding for pipeline projects.

Projects in procurement

The Department will continue to support Housing PFI projects in procurement, subject to rigorous demonstration of value for money. We currently expect this assessment and decisions on individual projects to be made in December.

Projects in procurement will also be subject to normal PFI approval processes and requirements.

Housing PFI projects in procurement are:

Local Authority	Project
Derby City Council	Social Rented Housing
Kent County Council	Excellent Homes for All
Kirklees Metropolitan Borough Council	Excellent Homes for Life
Lambeth London Borough Council	Myatts Field North
Leeds City Council	Little London
Leeds City Council	Beeston Hill & Holbeck
Manchester City Council	Brunswick Estate
North Tyneside Metropolitan Borough Council	Older People Homes for the Future
Oldham Metropolitan Borough Council	Gateways to Oldham
Salford City Council	Pendleton Estate

Stoke-on-Trent City Council	Extra-Care Housing
Wiltshire County Council	Social Rented Housing
Woking Borough Council	Priority Homes

Pipeline projects

Housing PFI pipeline projects i.e. those projects where the OBC has not yet been approved by the Department and HM-Treasury's PRG, do not have funding provision and therefore cannot continue to receive Departmental funding support.

Pipeline Housing PFI projects are:

Local Authority	Project
Birmingham City Council	Lyndhurst Estate
Cheshire East Council and Cheshire West and Chester Council	Extra-Care Housing
Camden London Borough Council	Gospel Oak Regeneration
Cornwall County Council	Extra-Care and General Needs
Hull City Council	Orchard Park Estate
Leeds City Council	Lifetime Neighbourhoods
Manchester City Council	Collyhurst Estate
Northampton Borough Council	Eastfields and Thorplands
Nottingham City Council	Meadows Estate
Portsmouth City Council	Somerstown Estate
Shropshire County Council	Extra-Care Housing
Southwark London Borough Council	Aylesbury Estate
Stoke-on-Trent City Council	Suburban Estate

will be given in particular over the course of the SR10 period to possible means and prospects to support local authority-led estate regeneration schemes including through non-PFI mechanisms. However we do not wish to raise any expectation of alternative funding at this time given the Department's tight SR10 capital and resource funding settlement.

Authorities with pipeline projects are asked to be aware that the Department may be able to consider their Outline Business Cases in the event of any further resources being made available in the latter part of the Spending Review period or a bid being made for PFI funding in the following Spending Review.

However, whether it is worth local authorities continuing to invest in developing their plans for possible future PFI or non-PFI funding routes will be a decision for each authority to consider and take at its own risk.

The HCA will be in direct contact and liaise with local authorities that have Housing PFI projects in procurement or pipeline projects.

7. REGENERATION FUNDING SPENT LOCALLY OVER THE LAST 5 YEARS

- 7.1 Simon Bevan, Interim Head of Planning and Transport, explained that because of the adverse weather conditions officers from Economic Development & Strategic Partnerships were unable to attend and they sent their apologies. However he would do his best to answer questions or get officers to respond to quires following the meeting.
- 7.2 The Head of Planning and Transport explained that section 106 money is generated by large scale developments. There is a levy and this money must be used to reduce any adverse impacts.
- 7.3 There will be some community councils areas where there are very few large scale developments going on; for example Dulwich. Developments may not reach the threshold of 10 units and even a 20 or 30 unit development will not yield much funding.
- 7.4 The officer explained that the council planning documents set out our criteria and policies and the council has been very successful in generating section 106 money. The council refuses planning applications where it considers that the section 106 provision is inadequate. This gives the council a robust negotiation position.
- 7.5 A member commented that Cleaner, Greener, Safer money could provide an opportunity to rebalance regeneration spending. There was a request for more information on the criteria used.

- 7.6 It was noted by a member that there had been specific regeneration programmes in areas that had attracted less Section 106 money , for example the Peckham Programme and regeneration around Bellenden.
- 7.7 The Head of Planning and Transport indicated that there may be opportunities to increase capital investment in the Peckham and Nunhead area by utilising potential development sites. These have lower land values than some areas lying closer to the city, so the section 106 yield would be lower, however development could contribute to regeneration.
- 7.8 There was a query on the new homes tariffs and whether this provided an opportunity for investment in community infrastructure.
- 7.9 Members noted the amount of regeneration spent on Elephant and Castle and the Aylesbury and requested further details and information on outcomes.
- 7.10 There was a query on Tax Increment Financing from a member. The Interim Head of Planning and Transport explained that this had been introduced to enable investment in infrastructure projects that could create value and drive up tax receipts from councils tax and business rates. Councils would be able to borrow money on the basis of projected receipts. Member requested more information on this.
- 7.11 Members noted that Borough and Bankside has received £264,070 through the 'Improving Local Retail Environments' whereas other areas had received under £20,000 .More information on the reasons for this were requested.
- 7.12 The Chair proposed that Cleaner, Greener, Safer money, and other funding sources were looked at to consider how inequality could be reduced and regeneration imbalances redressed.

RESOLVED

The committee resolved to look at opportunities to rebalance regeneration spending so that poorer areas are invested in and to ensure that regeneration spending is not concentrated on the richer areas.

Officers were asked to return with the following information:

1. Provide more detail of what has been included in the figures for expenditure on the Walworth area, with particular regard to spending on Elephant and Castle and Aylesbury. Details should relate to particular regeneration

projects and outcomes in concrete term.

2. Provide more detail, including the criteria, on the Improving Local Retail Environments programme especially why it is mainly spent in Borough and Bankside.
3. Provide more information on Cleaner, Greener, and Safer (CGS) funds, including the criteria used to set the amount of funds allocated to each community council area including clarity on if the funding levels relate to number of wards in the community council area. Explain why Peckham has the lowest expenditure/ allocation. The Chair suggested that discretionary allocations such as CGS could be used to rebalance the pattern of s.106 spending.
4. Provide a briefing on Community Infrastructure Levy (CIL) and whether this provides opportunities to spread regeneration spending more evenly across the borough (or more targeted at areas of need) than can be achieved with s.106
5. Provide a briefing on Tax Increment Financing (TIF) and whether there is potential to use this in Southwark and again achieve more even spend or spend which is more targeted at need.

8. WORK PROGRAMME

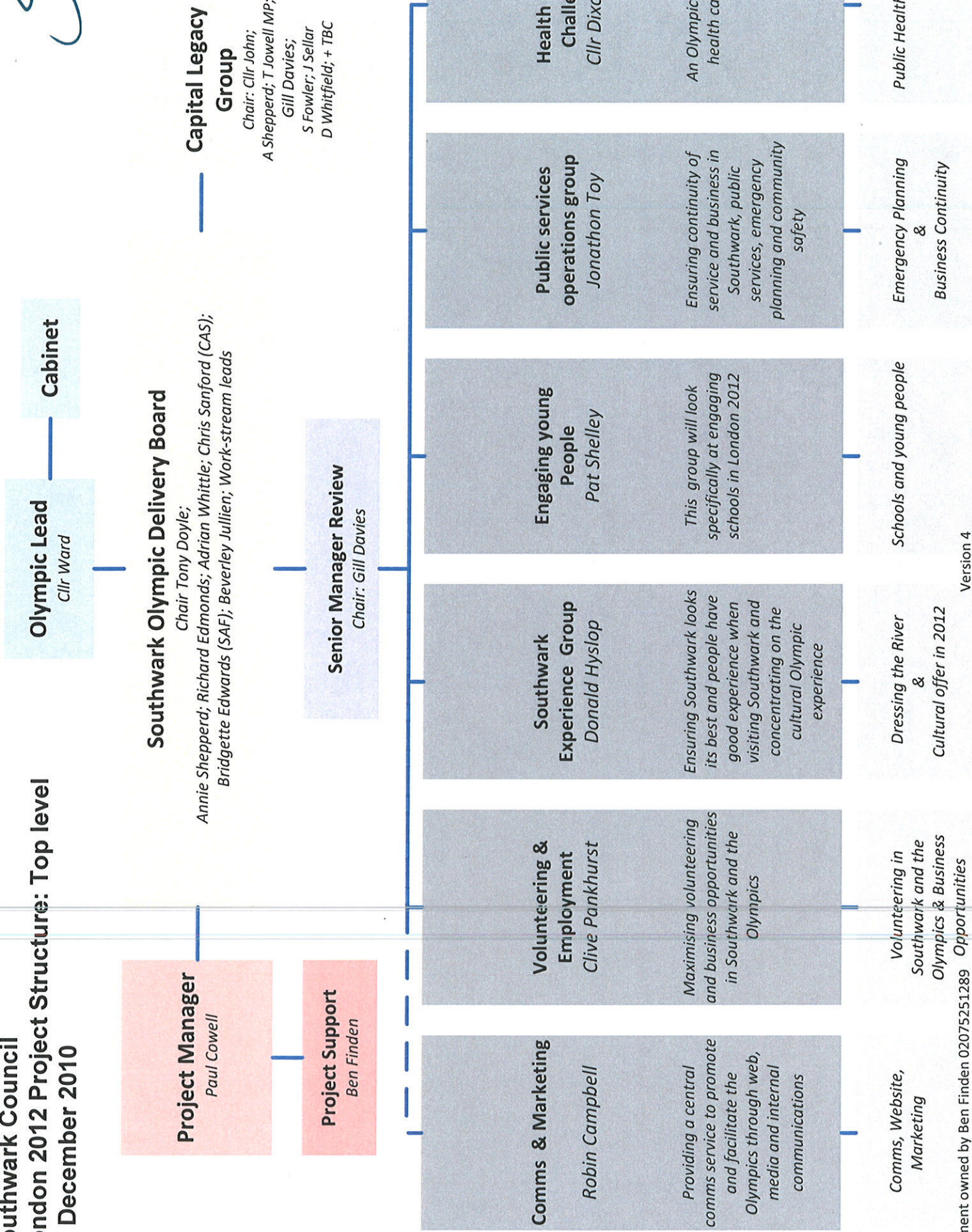
2 February 2011	<p>Olympic strategy and delivery plans will return to the committee with an updated action plan with clear outcomes, based on resources that will now be available following the cuts. The Olympic legacy will be determined with key benefits indicated in concrete terms, particularly:</p> <ul style="list-style-type: none"> i) How young people , for example school parties can attend the Olympics, particularly those who cannot afford tickets ii) Aspirations in terms of health iii) How will be the economic benefits be maximised , for example the East London line and tourism iv) What are the volunteer plans , particularly in relation to skills v) Links to Southwark Community Games
2 February 2011	<p>There will an update and review of 'Town Centre strategies' ; with particular reference to Camberwell, Peckham and Walworth</p>

2 February 2011	Employment and Enterprise strategy and delivery plans will return to the committee and partners will be asked to present on progress. , with particular reference to outcomes (both achieved and anticipated) for Camberwell, Peckham and Walworth
2 February 2011	<p>The committee resolved to look at opportunities to rebalance regeneration spending so that poorer areas are invested in and to ensure that regeneration spending is not concentrated on the richer areas.</p> <p>Officers were asked to return with the following information</p> <ol style="list-style-type: none"> 1. Provide more detail of what has been included in the figures for expenditure on the Walworth area, with particular regard to spending on Elephant and Castle and Aylesbury. Details should relate to particular regeneration projects and outcomes in concrete term. 2. Provide more detail, including the criteria, on the Improving Local Retail Environments programme especially why it is mainly spent in Borough and Bankside. 3. Provide more information on Cleaner, Greener, and Safer (CGS) funds, including the criteria used to set the amount of funds allocated to each community council area including clarity on if the funding levels relate to number of wards in the community council area. Explain why Peckham has the lowest expenditure/ allocation. The Chair suggested that discretionary allocations such as CGS could be used to rebalance the pattern of s.106 spending. 4. Provide a briefing on Community Infrastructure Levy (CIL) and whether this provides opportunities to spread regeneration spending more evenly across the borough (or more targeted at areas of need) than can be achieved with s.106 5. Provide a briefing on Tax Increment Financing (TIF) and whether there is potential to use this in Southwark and again achieve more even spend or spend which is more targeted at need.

CHAIR:

DATED:

[



Lead member Questions – Scrutiny sub-committee November 2010

Regeneration and Leisure sub-committee

1. What is the likely impact of the Coalition Government's cuts going to be on your department? (Mark Glover)

Government has cut funding to the arts and culture by 29.6% over four years. The Arts Council has said that it will pass 16.9% of this on to funded organisations and projects, commencing with a blanket 6.9% reduction next year. The year after that will see new funding criteria with some organisations at risk of losing out completely. This will impact on many arts organisations in Southwark, including those that are funded through the Arts Council. A strategic approach to funding arrangements within the Council and other partners should retain some service and hubs of activity in most areas of the borough.

The Culture service itself will face challenges in terms of delivering an arts, heritage and events programme at the current level but the current strategy aims to retain a whole borough view and to work with the Cultural Quarter to deliver services across the borough. We will also consider working in collaboration with neighbouring boroughs. However, this central government imposed cut may mean that some areas of service may have to cease operating.

The cuts have already had a tangible effect in the cessation of free swimming for children and older people. The end of Working Neighbourhood Fund (WNF) monies will impact on the delivery of the community sports programme and the Southwark Community Games. Sport England has received a reduction of almost 30% in its funding and capital grants from this and from governing bodies, to improve sport and health infrastructure are also currently in question. This is in advance of the spending review and is only likely to get more severe.

There is also a potential risk to services for adult learners. The Treasury is asking for reductions of up to 40% in public funding for education and training for people aged 19 and over. The emphasis will remain on acquiring and improving skills for employability. This is linked to an increasing need for provision of more qualification based courses. As a result of this, courses for leisure and pleasure will require much larger fee contributions from learners. In some "high-cost" courses which may recruit relatively low numbers this may mean learners will have to pay the full fees to recover the cost of running the course. There appears to be some continuing commitment to maintain the Adult Safeguard budget to support informal adult learning. This includes personal and Community Development Learning (PCDL), Family Learning, Literacy and Numeracy (FLLN), Wider Family Learning (WFL) and Neighbourhood Learning in Deprived Areas (NLDA). How this will translate into funding for Southwark is not yet clear, and is unlikely to be until closer to the end of our current contract with the Skills Funding Agency, which runs until 31st July 2011.

The Museums, Libraries and Archives Council (MLA) has been identified for closure by Government. Although not a direct funder of services, it has acted as a conduit for other funding streams and as an advocate for museums, libraries and archives with potential funders. This has included negotiating advantageous rates for subscriptions from local authorities for online information sources. The scale of provision of the library service in Southwark will need to be considered given the overall impact of Government cuts.

2. Will the possible expansion of Newington Reference Library be affected by the possible sale of Walworth Town Hall (Colomba Blango)

There is no funded project to extend the Newington Reference Library; therefore the sale of Walworth Town Hall will have no impact. The Newington Library and Walworth Town Hall are two totally separate buildings albeit next door to each other.

3. Can she update us on the Southwark Park Athletics track proposal and its future? (Paul Noblet)

Southwark park running track continues to be a priority for this administration, but at the moment we have to recognise that we do not have the funding available. We will continue to talk to local residents about their vision for the running track and at the same time investigate all possible funding opportunities for making that vision a reality.

4. Is the refurbishment of Seven Islands Leisure Centre a priority for the administration, and if so what is the timetable for plans to be drawn up and works to begin? (Paul Noblet)

Finding a practical, affordable solution for Seven Islands is a priority. A capital bid for seven million pounds has been submitted and will be considered as part of the budget process. A timetable will be published once a funding decision is made.

5. Can she update us on plans for the library building on Albion Street once it has been vacated in 2011 (Paul Noblet)

Once the Canada Water Library is ready for occupation, the current Rotherhithe Library will be declared surplus to the service requirements of the library service and passed to the stewardship of the Council's property team. Members will be aware that a report to the former Executive Committee in December 2006 secured tacit approval for the disposal of the building, with the resulting capital receipt being considered for contribution to the overall costs of the new library.

6. What is your opinion of the Elephant and Castle Leisure Centre consultation evening held on 14th September? (Cathy Bowman)

The consultation evening on the 14th September was a great success with over one hundred people attending but it is only part of the consultation being undertaken. Some of the key elements of the programme are as follows:

- On 23rd August 8th, 8190 letters were sent to residents (7,324) and Fusion customers (866). This was followed up by an e-mail to the Elephant and Castle leisure Centre stakeholder list which included all local politicians, stakeholders internal to the Council; sports groups and schools. Letters were also sent to 208 ex-residents of the Heygate who had opted to return to the area in the future.
- 28th September – South Bank University and London College of Communications, display in the libraries with opportunities to feed back

- 30th September – South Bank Forum- meeting for businesses, sports organisations and other stakeholders
- 5th October – Borough and Bankside Community Council meeting, display and questions
- 6th October – Walworth Community Council meeting, display and questions
- The consultation closed On October 8th and analysis is well underway
- Sport England have visited for an on-site consultation as has Proactive Southwark and advocates for disabled customers.

7. When is she planning to re-open the Watersports Centre Dockside Path following the recent refurbishment of the centre? (Paul Noblet)

There is no “dockside path” which has been closed. The question refers to a “cut-through” via the Watersports centre’s car park and past the launching slipway which had been used on an informal basis by some members of the public including cyclists and (even on occasion) people on mopeds and motorbikes.

The management of the centre and users had expressed concern for sometime that use by the public of this cut-through could be potentially hazardous both to the members of the public and to users of the centre due to the risk of collision either in the car park or on the path to the front-door of the centre or by the slipway.

The cut-through was closed when the site was closed for refurbishment (as it was then part of a building site). An assurance was given by the previous Lead Member for Culture, Sport and Leisure that an independent risk-assessment would be undertaken when the centre was back in operation to see what the situation was then. The rationale for this was that concerns had already been expressed about the safety of the cut-through prior to the refurbishment when the numbers of users were relatively few. The object of the refurbishment was to increase the number of users substantially which would also change the nature of the risk. This has proved to be the case. In the six months prior to re-development of the centre there were 22,000 visits. In the six month following the refurbishment the number has gone up to almost 56,000 visits.

The independent risk assessment has now been undertaken and the recommendation is that the cut-through should remain closed in order to ensure the safety of users and the general public. Officers from the Council’s Legal section have also provided further advice following the risk assessment. Their advice in sum is:

1. From their investigations there is no evidence of public or private right of way through the Centre’s property.
2. The findings of the risk assessment cannot be ignored. Doing so could well expose the Council to litigation, should an injury occur, and it could also invalidate the Council’s public liability insurance and also expose Fusion (the centre’s operator) to a similar risk.

Furthermore, there is a safer alternative route open to members of the public wishing to access Rope Street from Greenland Quay which is of no greater length or inconvenience to them.

8. Can she update us on the progress of the Canada Water Library?

The building works are progressing well and the library is expected to open in September 2011. A topping out ceremony for the building took place on November 3rd. Work has also commenced on purchasing stock for the library in order to ensure that a wide choice of books and other materials will be available when the building opens.

The search for a café provider has also commenced and is being handled by the Council's property team.

Discussions are being progressed with potential learning programme providers for the library and a range of organisations have expressed an early interest.

It is expected that the library will act as an anchor scheme for the regeneration of the area, offering a range of learning, cultural and social activities, linking well to transport to enable residents from other parts of the borough to visit, and that the café, learning facilities and exhibition and performance space will bring new users to the library. There will be a strong focus on provision for young people and families but the programme of activity will reflect, and be available to people of all ages and from all communities.

9. How will she use sports and activity in schools to help tackle childhood obesity? (Columba Blango)

The Sports Development Team and the Southwark Community Games provide extra curricular support to the schools in addition to the work undertaken by the school sports co-ordinators.

Under the auspices of the Southwark Community Games, fifty-six schools in Southwark receive an additional hour of sport per week in rugby, athletics and cricket over thirty weeks of the year. The programme is provided to the schools entirely free of charge. In 2009/2010 almost 8,400 individual children were involved in this programme

A random survey of 822 participants was undertaken as part of an MSc Dissertation by a Public Health student at Staffordshire University. Boys and girls from all the Community Council areas, both from school and street sessions and from both age range groups (8 to 11 and 12 to 16 years) completed questionnaires. Some of the findings included:

148 individuals from the sample had joined local sports clubs as a result of their involvement with SCG.

21 participants had become county or higher, level athletes.

75.1% reported that they had made new friends.

86.85% enjoyed competing against other children

59.9% said that they now eat a healthier diet.

61.4% reported that they were doing better at school.

226 (i.e. over 25%) of respondents took part in both school and street sessions.

The Superstar Challenge is a pilot programme which has been run with smaller groups of year five children (age 9 -10) who have been identified as overweight or obese, at small number of schools where there was a notable problem in this area.

Over the ten week programme children lost (on average between 2.6 and 2.9 cm from their waist circumference). This is rated as both positive and significant by health workers involved in the programme

Overweight and obesity occur when more energy is consumed through food and drink than expended through physical activity. At this level, regular physical activity together with a healthy balanced diet are effective mechanisms for controlling weight at an individual level. Southwark Children's Services has been investing in improving the life chances of Southwark pupils by supporting them to eat a balanced diet and enjoy physical activity on a regular basis through advice, guidance and support to schools on policy guidance and curriculum. This support has been provided to schools through the Healthy Schools team, complemented by support to deliver physical activity provide by the School Sports Partnership. Officers have been working with colleagues in schools to embed developments to secure good practice when funding ceases at the end of this financial year.

10. Will she guarantee the future of the community games? (Columba Blango)

The Southwark Community Games is part funded by Working Neighbourhood Fund which comes to an end in 2010/11. With the prospect of severe savings targets, following the Government's spending review, it is not possible for the Council to guarantee the future of any service. However, officers are investigating possible funding sources.

11. Given the likely reduction in the Council's budget forced by the state of the national finances, where do you intend to make cuts in your department if directed to by the Leader of the Council? (Columba Blango)

Officers are preparing options for savings of up to 25% of the current budget. These will be taken into consideration as part of the budget setting process together with proposals for this level of saving from across the Council. No decisions have been made at this stage.

12. Can she outline her views on the benefits to the community of the Event in Southwark Park and the Bermondsey Carnival? (Columba Blango)

The Event in Southwark Park became the Bermondsey and Rotherhithe Carnival in July 2010. Bermondsey and Rotherhithe Carnival is a community celebration, bringing together and showcasing many aspects of life in this area. This includes showing off and making use of the Victorian bandstand and beautifully refurbished park, local organisations promoting their services, arts organisations presenting their work and local schools participating in the parade with families and children enjoying a good day out.

The festival also tells the story of the area, feeding work with local historians and heritage organisations into all the activities across the event. The partnership work, the showcasing, the heritage education and schools arts programmes develop a sense of pride by creating a day that introduces them to new experiences and opportunities. The July 2010 festival was particularly successful in attracting families and children. The Blitz theme connected with a significant anniversary that is relevant

for the older generation in the area. This is one of the borough's free festivals and brings local people and visitors to the area together in a celebratory event.

**13. How will she guarantee a swimming pool at the Elephant and Castle?
(Cathy Bowman)**

On the 23rd November the Cabinet agreed to the recommendations in the report titled "Elephant and Castle – Provision of a new Leisure Centre". The report clearly sets out the facility will include the following core provision: a 6 lane 25m swimming pool, a learner pool, a 4 court sports hall, a gym, an exercise studio, a crèche and a cafe.

14. What Olympic events is she planning for the coming year to get young people interested in sport? (Cathy Bowman)

- Southwark's Community Sport and Physical Activity Team hosted the 2010 Olympic Open Weekend at Surrey Quays Shopping Centre back in July, the date has been set for next year's Open Weekend and will run over the weekend of 22nd - 24th July 2011.
- Southwark Community Games run events for schools and on housing estates in both Football and Athletics, both of which are Olympic sports. A three month programme of schools athletics coaching starts in the Winter School term from January to March 2011 with a participation rate of around 1,500 young people.
- Through the Sport Unlimited programme run in partnership with Southwark Council, Boxing, BMX and Table Tennis sessions are available for young people who are not usually engaged by team sports.
- National School Sport Week which will run from 27th June 2011 has a myriad of Olympic sports for young people to sample, try and compete in, the 2010 NSSW was attended by over 3,000 Southwark Young People and was coached by 30+ Southwark Council's Community Sports Coaches.
- SCG are currently delivering a three month programme of Tag Rugby in 55 schools which climaxes with a fortnight of competitions. Rugby will make its debut as an Olympic sport in the 2016 Olympics.
- The Council was the second signatory to 'Inclusive and Active' the London Mayor's plan for inclusion of disabled people in sport we are also signatories to the recently launched 'Inclusive and Active 2'. Under this scheme a full programme of sport is provided for people with disabilities including children and young people. According to the Inclusive and active survey the programme has been a success increasing the percentage of people with disabilities who are regularly active from 3.5% to 10.4% (the London average is 8.9%). Children with a range of disabilities participated for Southwark in the London Youth Games this year (and will continue to do so). A number of them gained individual medals (four gold, one silver and four bronze).

- Last but not least the main link to the Paralympics will be the programme called '**Playground to Podium**', which is a dedicated initiative designed to identify and nurture disabled young people with the potential to be elite athletes. It focuses on six sports, Athletics, Boccia, Football, Swimming, Table tennis and Wheelchair basketball. As part of this programme County Athlete Assessment days are run. This year it was at Crystal Palace stadium, where representatives/athletes from Southwark attended. The group of athletes attending these assessment days are organised mainly through the School Sports Partnerships, with support from schools and the Council

15. What are her plans for the former Livesey Museum? (Cathy Bowman)

The former Livesey Museum building is protected through the objects of the Trust for use as a library or similar use benefiting residents in the old parish of Camberwell, now Camberwell, Peckham and parts of Dulwich, Rotherhithe and Walworth areas. These objects are overseen by the Charity Commission.

An exercise was undertaken to find a suitable use for the building following its closure as part of a budget savings exercise in 2007. Theatre Peckham submitted proposals in line with the objects of the Trust and these were approved by the Executive. Unfortunately, Theatre Peckham have since withdrawn advising that they are unable to raise the requisite capital to fulfil their proposals and instead wish, for the moment, to concentrate on developing their organisational capacity.

Officers are in discussion with the Charity Commission and will be bringing a report on future options to Cabinet in December. There have been two approaches to the Council from voluntary sector organisations in regard to the building and these will be considered in line with the requirements of the object of the Trust.

16. What value does she place on the borough's historical and cultural institutions and what is her view of the importance of the borough having a vibrant cultural sector? (Cathy Bowman)

Southwark's historical and cultural institutions are integral to the borough's success, identity and future development. Southwark is one of London's most historic boroughs and has a rich artistic and creative track record, and this is to be celebrated in the borough and as part of London as a world city.

Our cultural institutions also work very closely with Southwark communities, schools, children and young people and the opportunities for experiencing, learning and creating are exceptional. The cultural sector is also important in terms of employment and economic impact.

Through a formal partnership with organisations in the South Bank and Bankside Cultural Quarter and with key institutions, I ensure that Southwark Council has close links with the major organisations and that the sector delivers for local people. This is particularly important in times of recession. Culture has been a key part of

regeneration in the borough, and I intend that this is the case in the on-going renewal of areas of the borough.

The cultural and creative industries are one of few growth areas of the economy and we need to ensure that young people in the borough are able to access opportunities for training and for future employment, and that our economic and enterprise strategies support creative businesses.

The vibrancy of the cultural sector is of course fuelled by new talent and cutting edge activities. I support the use of temporary and unused spaces in the borough for artists work, such as the Hannah Barry Gallery in Peckham. I also ensure that the borough is part of regional and national initiatives such Open House, London festival of architecture, Big Draw and Big Dance. I will also ensure that Southwark plays a key part in London 2012, and that the culture and history of our borough is promoted on a world stage through this opportunity.

17. Does she agree that having high quality play facilities, such as Tabard Astro Turf, is of vital importance to local children? (Cathy Bowman)

The provision of good quality sports and play facilities are important to children and young people all over the borough. Tabard Gardens had about £200k invested in improvements to the pitch in the recent past.

The Leisure and Wellbeing team are currently looking at funding opportunities for a number of other projects across the borough including the refurbishment of sixteen multi-use games areas (MUGAs), two per Community Council area. Two have been completed, one is underway and others are in process.

There are also plans for larger playing field developments. We are currently in discussion with the Football Association regarding a potential project at Homestall Road/ Peckham Rye, and gearing up to submit expressions of interest to the PlaySport Facilities Fund for other projects currently being identified.

18. Approximately 3 years ago there was a report compiled looking specifically at youth clubs and facilities. What has happened to this report? Were there any recommendations? What was the cost of this report? Did the Council receive value for money? (Helen Morrissey)

The report, 'Things to do, places to go, someone to talk to in Southwark - Activities for Children and Young People', was produced internally and therefore at no cost to the Local Authority.

The report is a live document and is still relevant as to how the Youth Offer is to develop over the next twelve months. We are looking at the issues around capital investment and considering which are our best possible options. A conditions survey of all youth service premises is taking place at the moment.

We have developed an Integrated Youth Support Service as recommended in the report and are in the process of firming up our commissioning arrangements for 2011/2012, another recommendation from the report.

As with all reports that have been in place for some time a variety of areas have already been implemented, such as the recommendations regarding the Connexions Service, but have since changed again due to changes in government funding.

Over the next six to twelve months we will be re-visiting the report, looking at how it aligns with service delivery at present, and how it can continue to help shape service delivery in the future.

19. What is the proposed process for the Elephant and Castle Leisure Centre? (Helen Morrissey)

The process for the delivery of a new Leisure Centre for Elephant and Castle is contained in the Cabinet Report of the 23rd of November but can be summarised as follows.

- Appointment of the LEP to deliver the project subject to value for money test
- Confirmation of funding being available by Cabinet as part of Capital Refresh
- Technical surveys and scheme design
- Sign off of a planning application prior to submission by the Cabinet Member
- Submission of planning consent/grant of planning
- Cabinet decision to formally award construction contract
- Decommissioning the existing centre and demolition
- Construction of the new leisure centre
- Commissioning and opening of the new centre

20. How will the Olympics benefit youth in Southwark?

The London 2010 Olympics and Paralympic Games provide an unprecedented opportunity for young people to get involved in sport, culture and volunteering, and in projects that promote understanding of the Olympic Values and engender a sustained interest in sport, physical activity and culture.

At least 50% of Southwark schools are involved in the Get Set programme which actively involves young people in sports and curriculum based activity relating to the themes and values. The Olympic Values are friendship, excellence and respect. The Paralympic Values are inspiration, determination, courage and equality.

Southwark's programme within the borough will include a programme of activities for young people to take part in the run-up to the Games and during the Games. This will include being part of London-wide cultural Olympiad projects such as Sounds 2012, as well as sporting activities. As spectators, young people will be able to experience key moments of the Games and ceremonies, such as the Torch Relay, and through the Live Sites. We also intend that young people be inspired by world class athletes and have opportunities to meet some of them within the borough.

Southwark's proposed volunteering programme will enable a number of young people to work as part of the visitor experience and 'welcoming the world' at this time. A number of young people will also be able to sign up directly to volunteer at the Olympic Park as part of LOCOG's 70,000 volunteers.

As far as possible, we will work to connect young people with the key moments in the Games and to the opportunities that are created at the Olympic Park after the Games.

Item No.	Classification: Open	Date: 2 February 2011	Meeting Name: Regeneration and Leisure Scrutiny Sub Committee
Report title:		Olympic strategy and delivery plans	
Ward(s) or groups affected:		All	
From:		Environment and Leisure department	

In December 2010, a more formal structure was launched within the Council to ensure that Southwark maximises the opportunities offered by the 2012 Olympics and Paralympics.

As well as addressing opportunities, the work of the project includes identifying resources managing risk, and ensuring that the day to day business of the Council can continue during the period of the Games.

A series of seven work streams have been established to focus on how different aspects of the Olympics impacts on Southwark and how the borough will respond. Each work stream has a formal work plan which is reviewed regularly.

The 7 work streams are;

- capital legacy,
- volunteering,
- emergency planning and business continuity,
- the Southwark experience,
- engaging young people,
- communications and
- marketing and health.

The project structure is appended.

All the work streams have begun. Achievements so far include:

- Increasing take-up of the Get Set London education programme from 40 to 101 schools, representing 83% of Southwark's schools and colleges, with the remainder being pursued
- Announcement of £2 million capital legacy fund
- Cited as the most progressed non-host authority in London in terms of emergency planning and business continuity arrangements

There is strong external involvement in this project, with two of the work streams being led by representatives of external organisations. The volunteering work stream is led by Clive Pankhurst of Volunteer centre Southwark and the Southwark experience work stream is being led by Donald Hyslop from Tate Modern.

In addition to this, a number of key cultural organisations including the South Bank Cultural Quarter organisations, Community Action Southwark, Southwark Arts Forum and South Bank University are involved in the work streams.

A series of presentations to Community Councils has commenced with those at Peckham, Nunhead and Peckham Rye and Camberwell already having taken place. Others are planned. These presentations explain how the community can be involved in the Games and some of them have been delivered by the Cabinet Member for Culture, Leisure, Sport and the Olympics.

The appended work plan includes timescales, resource issues, risks and other key data for the Committee to consider.

Southwark Council Olympics and Paralympics Strategy Group

Action plan 2010-2013

London 2012: Southwark Council Action Plan



Project Management and Planning								
#	Objective / Initiative	Expected Outcome	Milestones	Owner	Funding	Target Date	Progress	Comments
1	Produce and agree Olympic Vision Statement	An agreed Olympic Vision approved by the Olympic Delivery Board and Cllr Ward	✓ IDM,	A Whittle	N/A	Feb 2011	On target	
2	Establish Southwark Olympic Delivery Board	A Delivery board composed of resourced individuals who will take the day to day decisions	✓ Board established in October 21	A Whittle	N/A	Dec 2010	On target	
3	Establish working group/s / project strands	Develop the wider operation groups and work stream based sub-groups	✓ Regular 4 - 6 weekly meeting for each group	P Cowell	N/A	Nov 2010	Complete	
4	Agree 2012 action plan	Refine the action plan, settle on objectives and obtain approval	✓ Action plan content approved and agreed by all	P Cowell	N/A	ODB Jan 2010	On target	
5	Develop Electronic Filing system to manage project documentation	A filing system reflecting the structure of the project and the action plan	✓ ASAP	B Finden	N/A	Nov 2010	Complete	

28

London 2012: Southwark Council Action Plan



Capital Legacy Group

Objective / Initiative	Expected Outcome	Milestones	Owner	Funding	Target Date	Progress	Comments
Identify possible external funding sources	Funding sources available to fund capital projects identified	<ul style="list-style-type: none"> ✓ Confirm internal funding streams and pots ✓ Identify funding sources ✓ Secure funding. 	G Davies / T Clee	Existing resources	Dec 2010	On target	External match g dependent on internal fund raising.
Develop criteria for project bidding	An agreed criteria by which potential capital legacy projects would be judged and chosen	<ul style="list-style-type: none"> ✓ Develop criteria ✓ Agree criteria ✓ Implement criteria in bidding process 	G Davies	Existing resources	February 2011	On target	
Bid for and secure external funding for capital legacy fund	External funding secured ready for capital legacy bids	<ul style="list-style-type: none"> ✓ Decide on funding source ✓ Bid for funding ✓ Secure funding. 	Gill Davies / T Clee	Existing resources	April 2011	On target	
Publicise legacy projects to the residents of Southwark Council.	A marketing plan designed to communicate legacy projects to the people of Southwark, helping to foster support and excitement for the Olympic games in our communities	<ul style="list-style-type: none"> ✓ A marketing plan draft ✓ Periodic releases in LBS owned publications ✓ Press releases for significant developments 	R Campbell	Existing resources.	Summer 2012	On target	Linked to Comms and Marketing.

London 2012: Southwark Council Action Plan



Comms and Marketing *Providing a central comms service to promote and facilitate the Olympics through web, media and internal communications*

Objective / Initiative	Expected Outcome	Milestones	Owner	Funding	Target Date	Progress	Comments
<p>Communications programme for the Olympics.</p> <p>An over arching communications plan that will support engagement in the council's Olympic vision and the various work streams.</p>	<p>The plan will have clearly defined SMART objectives, easily identifiable milestones, details of the coordinated and integrated communications activity that will be undertaken and agreement on how the work can be evaluated.</p> <p>Any additional communications spend, other than officers' time, will be agreed beforehand before any work is undertaken to produce any marketing collateral such as leaflets, posters etc.</p> <p>The plan will be shaped by the over arching outcomes for the whole borough that are to be agreed by the ODB.</p> <p>The plan will include information for staff on how they can get involved, as well as agreed HR guidance around volunteering, taking time off to watch the Games etc.</p>	<p>2.12.10 ODB established 31.12.10 last date for London Ambassador registration 31.12.10 GLA Culture diary registration – last day Jan 2011 Detailed LBS comms plan to be agreed March 2011 – final date for entering info to the GLA culture diary 27.06.11 to 11.7.11 National School Sport Week July 2011 one year to go 22-24 July 2011 Open House 27.7.12 Opening ceremony 12.8.12 Closing ceremony</p>	Robin Campbell	Existing resources	Dec 2011	On target	<p>SMART communications objectives to be agreed once the ODB action plan has been signed off. Activity should focus on promoting Southwark specific initiatives and encourage the local use of the Inspire mark, whilst signposting audiences to official information outlets.</p> <p>It will be important not to replicate communications / information from these outlets, to concentrate the limited budget where it can have most impact - by promoting the "local" Southwark offer.</p> <p>It will be important to identify specific target audiences, both externally and internally.</p>
2012 brand management	To be able to use host borough branding on all relevant materials. All branding issues dealt with and resolved.	✓ LOCOG keen to have agreement signed by as many boroughs ASAP	Robin Campbell	Existing Resources	Feb 2011	On target	LBS legal happy and prepared to agree. 5 host boroughs have rejected the proposal to London Councils. We are waiting for further development.
Media development and management	<p>A plan for...</p> <p>1. Servicing the requests we'll receive for info / interviews / filming opps etc (in a way that ensures media office business can continue at the same time)</p>	<p>✓ January 2011: Agreement internally on objectives / strategy</p> <p>✓ Spring 2011: Take principles to stakeholders / research journalists' opinion and needs</p>	Robin Campbell / Dan Mazliah	Existing resources	Jul 2011	On target	Informal discussions have already taken place with Visit London who are keen to promote activities / locations for non accredited Olympic Games journalists.

London 2012: Southwark Council Action Plan



Comms and Marketing *Providing a central comms service to promote and facilitate the Olympics through web, media and internal communications*

Objective / Initiative	Expected Outcome	Milestones	Owner	Funding	Target Date	Progress	Comments
	2. Using the media interest as an opportunity to promote the borough	<ul style="list-style-type: none"> ✓ Summer 2011: Draw up detailed plan (including location, secondments, sponsor possibilities etc) ✓ Autumn 2011: Promote 					
Web and web 2	An up to date website used to provide local information to all audiences and visitors, signposting audiences to official information outlets.	Milestones to be agreed as part of the development of the communications plan.	Robin Campbell	Existing resources	Mar 2011	On target	The benefits of these communications channels is their instant and interactive characteristic that will support community engagement, particularly amongst younger people.
Internal communications plan	A executed communications plan to keep staff informed of policies on volunteering, annual leave restrictions over the games period, priority services, remote working and other issues affecting the way people work in the summer of 2012	<ul style="list-style-type: none"> ✓ Brainstorm meeting with head of HR (complete) ✓ Develop Olympic HR policies ✓ Develop the comms plan ✓ Execute the comms plan 	Kylie Yardley	Existing resources	Mar 2012	On target	
Games time information (linked to volunteering)	Working with partners to provide high quality and timely local visitor information, business information and other communications in the run up to and during the games.	LBS comms to focus on borough specific information, signposting audiences to official information outlets.	Robin Campbell LOCOG, GLA, SBBSCQ	Unknown at present.	Mar 2012	On target	Dependent on central LOCOG info coming first before knowing how this is going to work.

London 2012: Southwark Council Action Plan



Volunteering and Employment *Maximising volunteering and business opportunities in Southwark and the Olympics*

Objective / Initiative	Expected Outcome	Milestones	Owner	Funding	Target Date	Progress	Comments
Ensuring the volunteering legacy	To produce a volunteering legacy plan to reflect the London 2012 theme of a legacy games and ensure that the games have had a lasting and positive influence on volunteering in Southwark.	✓ Create the plan	Clive Pankhurst	Existing Resources	Sept 2012	Initial Stages	
Maximise participation in Inspire Projects			Clive Pankhurst	Existing Resources	March 2012	On target	
Establish no. of Southwark Volunteers for the Olympics and publicise	Publicity around the number of Southwark volunteers participating at London 2012.	✓ Number of Southwark resident volunteers established. ✓ Press release	Clive Pankhurst	Existing resources	Jan 2011	On target	
Development of local volunteering plan to support city host scheme	To develop local way finding, information and major event stewarding that support city wide 2012 schemes		P Cowell; SBBSCQV CS; Regen; LDA	Existing resources	Nov 2011	On target	Linked to Southwark Experience group
Establish and publicise numbers of Southwark people and businesses benefiting from the Olympics via BLCF, START and CompeteFor.	Press release about positive effect of Olympics on local trade, business and construction workers from Southwark.	Establish numbers and data Publicise	Amanda Lloyd	Existing Resources	March 2011	On target	
Revealed: a program of event management	2009/10 = 70 beneficiaries (individual or third sector groups)	✓ Planned delivery of six courses in early 2011	Paul Cowell	Adult learning team	March 2012	On target	4 standard courses and 1 TR&A focussed course 2011 Plus a one off marketing course

32

London 2012: Southwark Council Action Plan



Volunteering and Employment *Maximising volunteering and business opportunities in Southwark and the Olympics*

Objective / Initiative	Expected Outcome	Milestones	Owner	Funding	Target Date	Progress	Comments
training for Southwark residents with accreditation	<p>2010/11 = 80 beneficiaries (individual or third sector groups)</p> <p>2011/12 = 80 expected beneficiaries (individual or third sector groups)</p>						for older people

London 2012: Southwark Council Action Plan



Southwark Experience Working Group *Ensuring people have good experience when visiting Southwark and concentrating on the cultural Olympic experience*

Objective / Initiative	Expected Outcome	Milestones	Owner	Funding	Target Date	Progress	Comments
Produce a program of cultural and art events in Southwark for the Olympic and Para Olympic games period.	A program of art, music, performance and cultural activities in Southwark, creating an Olympic festival (programme) or events in Southwark that visitors can enjoy throughout the entire games period.	✓ Have an initial meeting to discuss and brainstorm (16 Dec)	D Hyslop	Unknown at this stage	March 2012	Initial Stages	
Discovering Places	A plan to promote Southwark's cultural quarters and hidden gems, heritage and contemporary cutting edge	✓ Create a project plan for discovering places (Mar 2011) ✓ March 2012 completion date for objective	A Whitehead	ACE and other partners	March 2012	On target	
Southbank and Bankside Cultural Quarter 2012 programme (also linked to volunteering, way-finding)	<ul style="list-style-type: none"> Cultural quarter area highlighted as key spot in world city Link to local communities in Southwark and Lambeth through high profile arts project (internationalism) 		A Whitehead; SBBS CQ	LOCOG SBBS CQ	March 2012	Ongoing	Bids and planning underway
Plan and execute World River for Southwark	<ul style="list-style-type: none"> Diverse communities to perform in the proposed Southwark stages. An event management plan for the opening day of World River 		P Cowell	LOCOG Legacy Trust	Aug 2012	On target	Music celebration of the River Thames on the opening weekend of the games
Way-finding and signage (linked to volunteering and comms)	Co-ordination of all way finding and signage feeding into wider London structures and local structures in the run up to and during games time		Public realm Comms; BIDs; GLA; Central LOPSG;	TBC	TBC	Initial Stages	

34

London 2012: Southwark Council Action Plan



Southwark Experience Working Group *Ensuring people have good experience when visiting Southwark and concentrating on the cultural Olympic experience*

Objective / Initiative	Expected Outcome	Milestones	Owner	Funding	Target Date	Progress	Comments
Look of Southwark	Feeding into 'London Look' and by creating safe, clean, functional and memorable environments (temporary or permanent) for visitors and residents across the borough	<ul style="list-style-type: none"> ✓ Identify Spectaculars in southwark ✓ Identify 'your 2012' in Southwark Council 	Public realm Comms; Culture; Regen'; SBBSCQ; BIDs; LOCOG; GLA;	LOCOG Look and Feel scheme + internal	July 2012	Ongoing	Linked to PSOG and Comms
Seek funding for and coordinate special events and street parties in the 2012 Summer	Coordination of a likely increased number of events and activities led by community groups and other members of the public. Ensuring impact is considered within overall operational context. E.g. Impact from combined effect of 2012 and Diamond Jubilee	<ul style="list-style-type: none"> ✓ December 2010: Culture 2012 diary updated with all known 2012 events. Development of policy and process for street parties ✓ Spring 2011: request for info from potential groups organising events in 2012. ✓ Summer 2011: launch street party plan. ✓ Autumn 2011: reminder request for potential events in 2012. 	J Benton; Events	Existing resources	July 2012	Initial stages	
LONDON PROACTIVE: Ensuring consistent quality across a diverse range of sports facility provider	Local quality accreditation. This could carry a Proactive Southwark endorsement and include a suite of basic criteria (e.g. for clubs/organisations. CRB checks) - Local mark is being developed	<ul style="list-style-type: none"> ✓ Scope accreditation system ✓ Roll out 	Proactive Southwark	Existing Resources	Summer 2011	On target	

35

London 2012: Southwark Council Action Plan



Engaging Young People *This group will look specifically at engaging schools and young people in London 2012*

Objective / Initiative	Expected Outcome	Milestones	Owner	Funding	Target Date	Progress	Comments
Promote Olympic opportunities to schools	All schools to be registered on http://getset.london2012.com 100% schools registered on the get set network and accessing opps and resources Schools engage in the range of programmes suggested and supported, and build these into the curriculum for the future	<ul style="list-style-type: none"> ✓ Regular bulletins to schools in Learning Matters – autumn 2010 – spring 2011 ✓ Inclusion in termly PSHE forum ✓ Letter from Leader to Head teachers in Nov 2010 	Philippa Beagley Tim Hetherington Elaine Waters	Existing resources	Easter 2011	On target	83% registered as of 20/01/11. However, less than 10% signed up to the network.
Promote Olympic opportunities to young people	Youth agencies and groups made aware of Olympic related opportunities.	<ul style="list-style-type: none"> ✓ Identify Olympic benefits for young people generally rather than just schools ✓ Plan how to promote benefits to young people ✓ Engage young people on Olympic opportunities. 	Pat Shelley	Existing Resources	Easter 2011	On target	
Work with schools to develop Olympic action plans	All schools to have Olympic related activity built into relevant programmes of study e.g. PSHE programmes of work or Healthy Schools Enhancement Model which reflect Olympic Values	<ul style="list-style-type: none"> ✓ School action plans amended to reflect Olympic values. 	Philippa Beagley Deirdre Barry	Existing resources	Sep 2011	On target	
Dance Challenge 2012	An Olympic themed Dance Challenge for 2012	<ul style="list-style-type: none"> ✓ Dance Challenge 2011 ✓ Include Olympic values in Dance Challenge format 	Philippa Beagley	£5,000 14-19 team +	Jun 2012	On target	
Support and encourage schools in the delivery of travel and tourism, volunteering, enterprise and	Programme of training and support provided to secondary schools by Southwark 14-19 team Increased number of young people gaining nationally accredited		Philippa Beagley	14-19 team FL grant	July 2012	On target	Southwark Children's services are registered as an ASDAN, NOCN and arts award centre to accredit young people taking qualifications out of statutory settings

36

London 2012: Southwark Council Action Plan



Engaging Young People *This group will look specifically at engaging schools and young people in London 2012*

Objective / Initiative	Expected Outcome	Milestones	Owner	Funding	Target Date	Progress	Comments
sustainability qualifications	<p>qualifications linked to employability skills</p> <p>Improved CVs, personal statements and UCAS statements of young people</p>						
Working with schools and other educational settings on the development of quality PSHE programmes of work reflecting Olympic Values	<p>Accredited outcomes by ASDAN PSD</p> <p>Quality PSHE provision for all by 2015</p> <p>SEAL integrated into new curriculum</p>	<ul style="list-style-type: none"> ✓ Southwark Children's Service registered as ASDAN PSD centre. ✓ Audit of provision (ongoing) ✓ New curriculum plans 	<p>Philippa Beagley</p> <p>Clare Smith</p> <p>Helen Blackburn</p>	<p>14-19 Funding</p> <p>Health and Education funding</p> <p>Schools</p>	July 2012	On target	
Seek engagement of disabled young people in Olympic opportunities			Phillipa Beagley		March 2012	Initial stages	
Develop an extensive volunteering programme for all young people linked to Olympic activity	<ul style="list-style-type: none"> ✓ Increased numbers of young people volunteering ✓ Increased numbers of YP given accredited qualifications ✓ Increased personal and social skills of all YP involved. 	Volunteering programme developed by Spring 2011	Clive Pankhurst	Existing Resources	May 2011	On target	
PROACTIVE LONDON: Proactive Southwark involved in identifying potential Olympic themed projects – identify potential and realistic projects at a local	<ul style="list-style-type: none"> ✓ Revised list of projects and programmes developed - Number of projects / implementation / impact on participation 		PROACTIVE SOUTHWARK Strategic group	Existing Resources	March 2011	On target	

37

London 2012: Southwark Council Action Plan



Engaging Young People *This group will look specifically at engaging schools and young people in London 2012*

Objective / Initiative	Expected Outcome	Milestones	Owner	Funding	Target Date	Progress	Comments
level							
Free Access for National Sports People (FANS) Scheme (Inspire mark project):	✓ Increased participation of local residents at sport centres	Launch date: 26 January 2010 Establish the National sportspersons Establish their local sports centre Publicise Measure increase in sports centre use.	Kate Budd	Existing Resources	March 2012	On target	Will launch Feb 2011

London 2012: Southwark Council Action Plan



Public Services operations: business as usual *Ensuring continuity of service and business in Southwark, emergency planning, public services and community safety*

#	Objective / Initiative	Expected Outcome	Milestones	Owner	Funding	Target Date	Progress	Comments
	Identification and assessment of the resource requirement and availability (HR + financial) for the Olympics and summer 2012	Following a detailed assessment on the capacity for Southwark to resource public service during 2012, we will have a strong idea of any existing resource deficits and requirements, ready to feed into the PSOG day to day strategic plan for the 77 day games period inclusive of significant events in the summer of 2012 e.g. Shard opening; Jubilee; Mix	<ul style="list-style-type: none"> ✓ Data from all services being collected ready for December 2010 	Jonathon Toy	Not required	March 2011	On target	
	A draft strategic and operational plan in place for the 77 day games period	A 77 day plan/map model informed by resource availability, the key event calendar, expected footfall in Southwark and information and intelligence from the central Olympic ctte and partner agencies.	<ul style="list-style-type: none"> ✓ Borough zoning needs to be defined but is dependent on external factors. ✓ Maps to be produced and information drawn from the resource assessment exercise 	Jonathon Toy	Existing	March 2011	On target	Taking into account: <i>Parking enforcement; CPZs; Hygiene and waste services; Streetscene arrangements; Highways; PCT and NHS emergency planning; Licensing and enforcement; Community safety; environmental enforcement and the emergency services.</i>
	Establish an integrated and comprehensive intelligence unit	An established intelligence unit responsible for the collation and dissemination of information from the wide variety of internal and external agencies affecting the day to day planning of public services throughout the games and summer of 2012.	<ol style="list-style-type: none"> 1. Identification of Membership 2. Identification training need 3. Workshop training 4. Test Exercise (May/June 2011) 5. Confirmation of roles and responsibilities 	Jonathon Toy	TBC: not known at this time.	June 2011	Initial Stages	This objective includes the training of intelligence unit members

London 2012: Southwark Council Action Plan



Public Services operations: business as usual *Ensuring continuity of service and business in Southwark, emergency planning, public services and community safety*

#	Objective / Initiative	Expected Outcome	Milestones	Owner	Funding	Target Date	Progress	Comments
	Establish the strategic operation group	An established group that will deliver the day to day actions throughout the games and summer of 2012, responding to resource needs based on information from the intelligence unit and resource availability.		Jonathon Toy	Existing	June 2011	On target	This objective includes the training of the strategic operations group members
	Develop and run a test exercise for strategic, operational and planning processes	A successful test of the strategic operations draft plan under hypothetical scenarios.	✓ Test exercise and scenarios planned.	Jonathon Toy	Existing	July 2011	On target	
	Identify legal issues	A thorough understanding of any legal issues affecting any aspect of the PSOG, their potential impact on the 77 day plan and any mitigating actions available to meet legal requirements.	✓ Identify the legal issues e.g pavement licensing; CPZs; increased powers for Comm Wardens; mutual aid issues and cross borough powers.	Jonathon Toy	Existing	July 2011	On target	
	Contribute to and advise comms team on development of HR plan.	Work with HR and Communications: advise on priority services and resource issues, helping to shape the comms plan.	✓ Meet with HR and comms	Jonathon Toy	Existing	Feb 2011	On target	Linked to Comms and Marketing action plan.

40

London 2012: Southwark Council Action Plan



Health Factor challenge *An Olympic led public health campaign*

#	Objective / Initiative	Expected Outcome	Milestones	Owner	Funding	Target Date	Progress	Comments
	The Health Factor Challenge	12 Southwark resident's fitness improved with a healthier lifestyle	<ul style="list-style-type: none"> ✓ Identify the 12 residents ✓ Establish content of the health factor challenge programme ✓ Facilitate the programme ✓ Complete the programme ✓ Publication 	Cllr Dixon-Fyle	Unknown at present	May 2012	On target subject to plan	
	Increase participation in Change 4 life campaign	Promoting key messages and campaigns on obesity, healthy eating and a stepped approach to physical activity <ul style="list-style-type: none"> • over 50s • BME communities • schools • workplaces 	<ul style="list-style-type: none"> ✓ 14 days of promotion to over 50's: May 2010 ✓ Schools: termly support till 2012 ✓ BME toolkit – rollout by March 2011 ✓ Workplace events and Chamber of commerce proposal : March 2011 	Rose Dalton-Lucas	15K (Go London and Healthy Schools)	March 2012	On target	
	Health and Social Care – pathways to activity	Workforce to refer, signpost and deliver physical activity opportunities via: <ul style="list-style-type: none"> • Health Checks Programme • Get active London web portal and Health Centre TV ads • Walk leader training • Active 4 Life GP walking programme • Social services – 	<ul style="list-style-type: none"> ✓ Signposting info for Health Checks and Active 4 Life by June 2010 ✓ Integrate Get active London web portal with H&SC homepage June 2010 ✓ Promote Walk leader training for Early Years staff 2010/11 	Rose Dalton-Lucas	Via existing services	May 2012	On target	
	PROACTIVE LONDON: Improve the promotion of walking and cycle routes	Increased use of routes Promotion plan in place.	<ul style="list-style-type: none"> ✓ Identify resource need ✓ Review implementation possibility 	T Hetherington	Required	March 2012	On target	

41

Item No.	Classification: Open	Date: 2 February 2011	Meeting Name: Regeneration and Leisure Scrutiny Committee
Report title:		Update on Southwark economic development strategy	
Ward(s) or groups affected:		All	
From:		Graham Sutton Economic Development Manager	

ECONOMIC DEVELOPMENT STRATEGY

1. The economic development strategy 2010-2016 was adopted by the council's cabinet in November 2010. The strategy prioritises
 - Tackling the barriers to work faced by priority groups
 - Increasing business and employer engagement
 - Raising skills for sustained employment
 - Supporting existing businesses
 - Developing key business districts and town centres
 - Increasing business start ups

The strategy has been published and is available at

http://www.southwark.gov.uk/info/347/economic_development/2024/economic_development_strategy

2. Economic development officers are working with colleagues across the council to ensure the strategic priorities feed into other regeneration and town centre strategies, through management of the cross-council Camberwell delivery team, and focusing on the Camberwell Action Area Supplementary Planning Document, Peckham and Nunhead Area Action Plan and the Elephant and Castle regeneration. (See item X update on town centre strategies).
3. The economic development strategy is supplemented by annual delivery plans for employment and enterprise; these provide an overview of the actions strategic partners are taking to deliver these priorities. Plans in place for 2010/11 are interim plans, as significant changes in national policy and funding during the year have had a major impact on planning of service delivery and interventions for all partners, and the adoption of the economic development strategy took place in mid-year.
4. At the end of the year achievements against the 2010/11 delivery plans will be reviewed and new delivery plans will be drafted for 2011-13. We anticipate that as 2011/12 progresses and the funding landscape stabilises we can work with partners to develop more thorough and measurable delivery plans. The delivery plans will be updated during the year to reflect any changes to provision in Southwark.

5. To this end it is proposed that presentation of next year's delivery plans to the scrutiny committee takes place in September 2011. At that point, our key partners in the delivery of employment and enterprise programmes for 2011/12 will have established their programmes and we will be able to propose which partners would be best placed to present to the scrutiny committee. It is suggested that these partners should commence with Jobcentre Plus and a Work Programme prime contractor.
6. The ending of Working Neighbourhoods Funding which the council was able to use to support local employment and enterprise provision will have a big impact on local provision. The government is implementing the Work Programme currently planned from July 2011 (see below). The impacts of this on local provision and the availability of locally based and targeted support is yet to be determined. A dialogue with the prime contractors (once appointed) would be a good opportunity to influence and shape provision in the borough for the next 3 years.
7. By the September meeting we will have more information on the challenges of delivering the strategy with reduced funding, dealing with continuing impacts of the recession and how the strategy has been used to steer provision in Southwark.

THE DWP WORK PROGRAMME

1. The Work Programme is the centrepiece of the government's plans to reform welfare-to-work provision and will replace all current DWP programmes such as Flexible New Deal (FND) and Pathways. Roll out of the Work Programme will begin from spring 2011 and be in place across the country by summer 2011. It is being commissioned directly by DWP.
2. Three providers (prime contractors) will be selected to deliver the Work Programme in the east London contract package area (which includes Southwark among 17 local authority areas). They will support a wide range of client groups regardless of which out of work benefit they are claiming, and are therefore likely to require a delivery partner network which can provide specialist support for disadvantaged groups.
3. This reform of welfare to work provision means there will be fundamental changes to resources for reducing worklessness in Southwark, with funding going directly to the prime contractors via long term contracts, but there are also opportunities for local providers to become part of the specialist supply chain. Once selected, the prime contractors will be invited to join Southwark's Local Economy Group which oversees the economic development strategy and delivery plans on behalf of Southwark Alliance. At the time of this report, the council's economic development team is negotiating with prospective bidders to maximise the possible opportunities for local providers of employment and skills support to supply services to the DWP's prime contractors.

Item No.	Classification: Open	Date: 2 February 2011	Meeting Name: Regeneration and Leisure Scrutiny Committee
Report title:		Update on town centre strategies with particular reference to Camberwell, Peckham and Walworth	
Ward(s) or groups affected:		East Walworth, Newington, Faraday, Camberwell Green, Brunswick Park, Peckham, The Lane, Livesay, Nunhead	
From:		Eleanor Kelly, Deputy Chief Executive	

BACKGROUND

1. Southwark's Core Strategy, which is due to be adopted this year, seeks to maintain 'a network of successful town centres which have a wide range of shops, services and facilities, to help meet the needs of Southwark's population. Our centres will be well used because they are vibrant, easy to get to, friendly and safe.'
2. The Core Strategy designates Elephant and Castle/Walworth Road, Canada Water and Peckham as 'major centres' according to the hierarchy of town centres in the London Plan based on a number of criteria including the amount of retail floorspace. Camberwell is one of five 'district town centres', the tier below major centres.
3. The designation of Elephant and Castle/Walworth Road as an integrated major centre is an aspiration which will come about through the Elephant and Castle regeneration as they do not function as one centre at present. The Core Strategy proposes major growth in retail provision at Elephant and Castle and Canada Water and this is supported by the Retail Capacity Study carried out in 2009.
4. Other centres need to adapt to meet current needs – especially Peckham which has for many years been the borough's only major centre and Camberwell.

CURRENT POSITION: PECKHAM

5. The Peckham and Nunhead Area Action Plan will set out how we will make sure that over the next fifteen years we get the development needed to support a healthy, safe and prosperous community reducing inequalities within the borough.
6. The strategy, planning policies and implementation plan will cover:
 - town centre improvements including the type of shops, the environment and accessibility.
 - the type of development that can be built on the large sites providing clarity for developers to encourage them to develop
 - a new conservation area to protect historic buildings as part of new development.
 - the size and design of new buildings to make sure that they improve the local character

- the amount and type of new homes to increase provision of affordable homes and housing choice.
 - the impact of new development on the environment and traffic.
 - the community facilities needed to support a successful local community network
 - protection of existing business floorspace and promotion of new floorspace for small and medium sized enterprises.
 - protecting more open spaces
 - improving movement around Peckham and Nunhead on foot, by bike and public transport.
7. The implementation plan is important to make things happen including details of partnership working, consultation, provision of infrastructure and planning obligations. The AAP will help fund long term improvements by making sure that private developers contribute to public spaces, improvements to employment opportunities and upgrading public transport. We will be consulting on a set of proposals for bringing improvements to area, known as preferred options during the spring and summer 2011.
8. Improvements to Peckham town centre are also supported by the Nunhead and East Peckham Renewal Area. These include improvements to shop fronts in areas around the town centre: coordinated with the Improving Local Retail Environments (ILRE) scheme works have started to improve shop fronts in Meeting House Lane. Pilots are being developed in consultation with local traders and residents to extend shop front improvement schemes to Queens Road and Nunhead Lane/Evelina Road. More shops may be included if the renewal area funding is agreed.

Peckham Town Centre Forum

9. The Peckham Town Centre forum is a resident led and coordinated forum which meets on roughly a two monthly basis. The aim of the forum is to encourage the revitalisation of the town centre. It is open to all who are enthusiastic and with ideas and energy for revitalising Peckham town centre. The aim is to nurture a growing network of individuals who can contribute ideas and actions to imaginative new initiatives and to enable people with ideas to get together to share ideas and take actions.
10. Meetings of the forum tend to be shaped in a way to encourage people to come up with ideas and sell them to others who would be interested in supporting said actions. This means that the meetings are more action than issue oriented - even though issues do come up. So that during the introductions - people and/or groups who have a particular issue that they would like to pursue will introduce themselves and then hold a separate workshop about the issue and how to take it forward. There are generally 4 - 5 such workshops per meeting and the other attendees go to the workshops that they are interested in. Each workshop leader then takes notes etc. and hands them back to the coordinator. The forum also acts as a networking space for people with ideas to meet each other. The last meeting took the form of an urban design walk around the town centre.
11. Some emerging ideas were
- creativity,
 - entrepreneurship and commercial regeneration
 - local energy and food production
 - town centre physical fabric revitalisation
 - how all these matters relate to health and well being

CURRENT POSITION: CAMBERWELL

12. The core strategy sets the vision for Camberwell as follows:

‘We will continue to protect this successful town centre which has many small and medium sized businesses. Many of them are independently run which helps to give Camberwell a special character. Butterfly Walk shopping centre is the only large development site. However the focus is on improving current shops rather than retail growth or new development, particularly businesses in the town centre and along Camberwell New Road towards the Oval.’

Camberwell Development Team

13. Officers have been developing a coordinated approach to regeneration activity and joining up Council services in Camberwell. In recent years a range of reports and studies have identified the key areas for improvement in Camberwell. Furthermore, cross-border issues with Lambeth have been discussed at local community council meetings and priorities for action agreed. In response, officers have established an internal ‘development team’, whose purpose is to join up existing Council activity in Camberwell and align resources to key priorities. The development team is comprised of officers from economic development, planning, transport, community safety, housing, public realm, communications, property, and culture, libraries, learning and leisure. Economic development is leading on the coordination and facilitation of the meeting and reporting to Cllr Colley as the lead member.

14. An internal delivery plan is in place, which is comprised of workstreams under three main objectives:

A. Develop a strategic and coordinated approach

Initiatives, most of which are immediate or short-term, that will bring resources together in a strategic and joined-up way, including.

- Setting up the Camberwell development team
- Developing a delivery plan
- Developing a planning framework, including short-term public realm improvements and a Camberwell Action Area Supplementary Planning Document
- Establishing a profile of commercial property ownership
- Dialogue with businesses and building capacity
- Identifying opportunities across the delivery plan for cross-border working with Lambeth
- A communications plan to give clear and consistent messages about developments

B. Improve the town centre

Projects and services that are focused on the town centre area

- Streetscape management
- Opportunities for development of retail offer
- Night-time economy and potential for ‘purple flag’ scheme
- Shopfront improvements to historic buildings
- Establishing markets on Camberwell Green
- Quick-wins for public realm improvements

- Development of new Camberwell 'Space' in front of magistrates court to include library and other uses
- Transport improvements, including potential for significant changes to the pedestrian environment and bus interchange
- Refurbishment of Camberwell Baths and improvements to surrounding environs

C. Improve the wider area

Projects and services that will benefit the wider Camberwell area

- Transport improvements in targeted areas such as Southampton Way, Denmark Hill and Camberwell Road junction
- Development or relocation of existing employment and skills projects to the Thamesreach Academy, currently in development
- Housing regeneration schemes in East Dulwich, Champion Hill, Elmington, Wyndham and Comber estates
- Investment in schools and links with community facilities
- Targeted community safety initiatives on estates and activities of wardens/ PCSOs and Safer Neighbourhood teams

Camberwell Action Area SPD

15. A draft Camberwell Action Area Supplementary Planning Document (SPD) will be consulted on in September 2011 to guide development and changes in the Camberwell area. The SPD will provide detailed guidance for the area and expand upon the Core Strategy area vision for Camberwell. It is anticipated it will be adopted at the end of 2012. It will cover:
 - Vision for how Camberwell will develop, including what sort of uses we want to prioritise and their locations. The SPD can only provide guidance to the Core Strategy and cannot depart from what is prescribed in the Core Strategy. (It will not be able to change the approach to protecting/allowing changes of use or to the mix of shopping).
 - More detailed guidance for sites over 0.25 ha and under 0.25 ha that could be developed for housing with how much development we think could be built and when this could come forward.
 - Identification of all potential development sites that need detailed information on appropriate bulk, scale and massing and to provide guidance on this if we do not feel the design guidance in the Core Strategy is enough.
 - Focus on improving local shops and businesses, and encourage more small businesses in the town centre and wider action area.
 - Further detail on the character of the area that we are seeking (for the areas not covered by the Conservation Area).
 - Details and implementation of a transport strategy in partnership with TfL.
 - Highlight status of Camberwell Green as an important open space within the town centre that needs improvement.
 - Encourage creative and cultural industries as they add to the vibrancy of the area and provide employment.
 - Provide a robust framework for negotiating section 106 planning obligations to help ensure that all new development is supported by the appropriate infrastructure it requires to meet the social, economic and environmental needs that it generates.
16. However changes can still happen in the meantime, while we are preparing the SPD. We can agree and progress transport improvements (see below)

and other public realm programmes like the community project bank and then use the Section 106 SPD to fund these when development occurs.

Transport in Camberwell

17. The impact traffic has on the environment of Camberwell Town centre is of particular concern to the community. The area has historical issues in the area of road and pavements layout leading to severe traffic congestion, pedestrians being unable to cross roads safely, and insufficient space on the footpaths.
18. Work on progressing designs on improvements to the road and pavements in Camberwell town centre has now been confirmed with the receipt of £200,000 funding from TfL. The funding will go towards developing and testing proposals and consultation with the community. It is hoped that preliminary work in the area will attract further future investment from TfL and other sources, of nearly £7m.
19. The ultimate objective is to 'recreate the street' to combine highway layout changes and public space improvements, leading to a dynamic new space for the area.
20. Discussions are ongoing with TfL around options for better managing the bus interchange functions to ensure that the impact is lessened whilst retaining maximum access to public transport for the residents and businesses in the area. The hospitals are actively involved in the scheme development through the Camberwell Travel Plan Group.
21. Options include:
 - Camberwell Green Junction - reduce pedestrian crossing distance, review and remove pedestrian guard railings and review signal timings.
 - Denmark Hill - widen pavements; make crossing safer right up to Coldharbour Lane
 - Wren Rd - green/walking link to Butterfly Walk
 - Orpheus Rd - enliven blank walls

CURRENT POSITION: WALWORTH ROAD

22. The Core Strategy identifies Elephant and Castle/Walworth Road as a major town centre with existing retail floorspace of 69,000 sqm and states that we will enable the provision of around 45,000 sqm of additional shopping and leisure space at Elephant and Castle/ Walworth Road, focusing on provision of new non-food shopping and strengthening its role as a major town centre.
23. Lend Lease are bringing forward a planning application for submission in 2012 which will include proposals for new retail at the northern end of Walworth Road. An updated supplementary planning document is to be prepared for the Elephant and Castle which will incorporate Walworth Road and provide guidance on how an integrated shopping centre will be achieved. This is to be prepared during the course of 2011.
24. Walworth Road received major investment in 2007 in the form of the 'streets for people' project which aimed to give space back to pedestrians by generally improving the public realm with wider footways, tree planting and new street furniture. It also achieved improvements in road safety.
25. The Lip (local implementation plan) programme for 2010-11 includes £250,000 for improvements to East Street currently being implemented.

This page is intentionally blank.

DISTRIBUTION LIST**MUNICIPAL YEAR 2010/11****COMMITTEE:** REGENERATION & LEISURE SCRUTINY SUB-COMMITTEE**NOTE:** Please notify amendments to Scrutiny Team (0207 525 0324)

<u>OPEN</u>	<u>COPIES</u>	<u>OPEN</u>	<u>COPIES</u>
<u>MEMBERS/RESERVES</u>		Libraries	3
Councillor Mark Glover (Chair)	1	Local Studies Library	1
Councillor Columba Blango	1	Press	2
Councillor Cathy Bowman	1	Scrutiny Team SPARES	10
Councillor Dan Garfield	1	Gillian Jeffery/Alan Ledden, Legal Services	1
Councillor Helen Morrissey	1	Shelley Burke, Head of Overview & Scrutiny	1
Councillor Paul Noblet	1	Dan Falchikov, Liberal Democrat Political Assistant	1
Councillor Martin Seaton	1	John Bibby, Labour Political Assistant	1
Councillor Stephen Govier (Reserve)	1	<u>EXTERNAL</u>	
Councillor Helen Hayes (Reserve)	1		
Councillor Jeff Hook (Reserve)	1		
Councillor Andy Simmons (Reserve)	1		
Councillor Geoffrey Thornton (Reserve)	1		
<u>OTHER MEMBERS</u>		TOTAL HARD COPY DISTRIBUTION	32
Councillor Lisa Rajan	1		
<u>DEPARTMENTAL OFFICERS</u>			
HARD COPIES OF THIS AGENDA ARE AVAILABLE ON REQUEST FROM THE SCRUTINY TEAM Tel: 0207 525 0324			